

Chäsimmatt

Rotkreuz, Switzerland

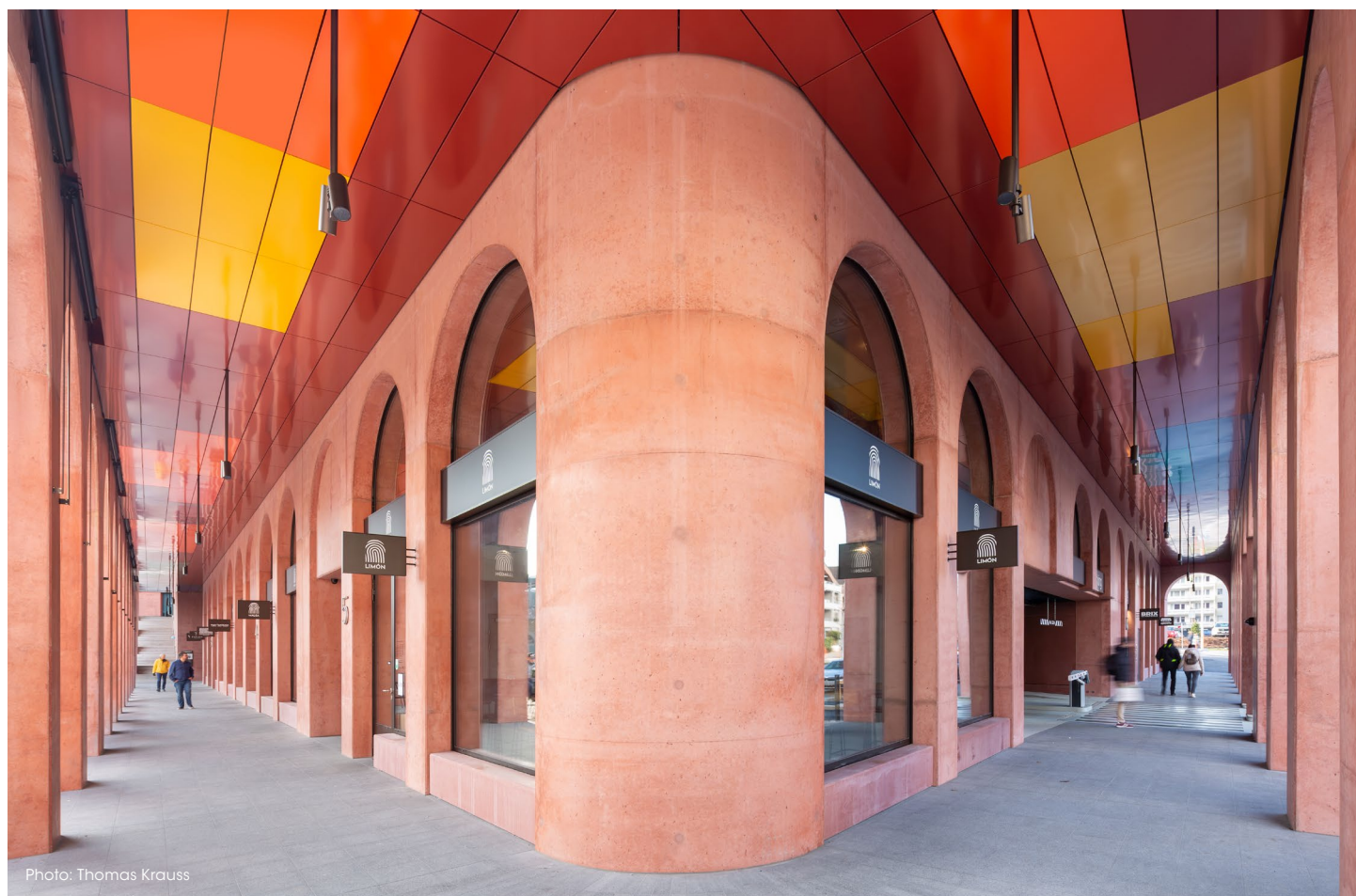


Photo: Thomas Krauss

The Project

In the heart of the small Swiss town of Rotkreuz, the Chäsimmatt development is creating a lively new district that combines modern design with a great quality of residential and working accommodation, together with spaces for encounters and dialogue.

Particular attention was paid to the design of exterior areas, in particular to the ceiling structures that help to define the character of this new part of town. This involved the use of durlum's S7 EXTERIOR rail channel system. This hard-wearing metal ceiling system is ideally suited to exterior spaces, able to withstand high wind loads and resistant to corrosion. Powder-coated in 13 different RAL colours, this ceiling is an eye-catching feature with the durability to assure a long useful life.

Chäsimmatt sets new standards for urban living in Rotkreuz with its clean lines and sustainable construction.

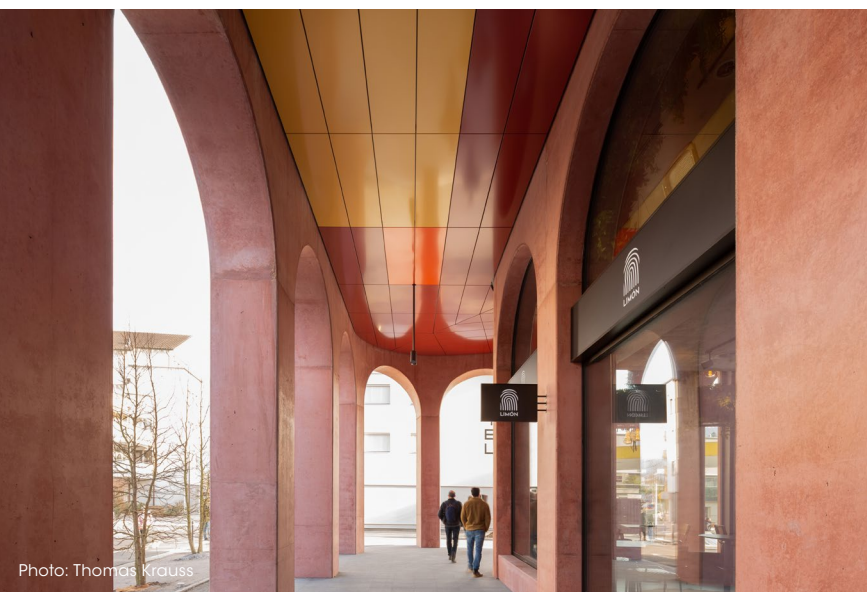


Photo: Thomas Krauss

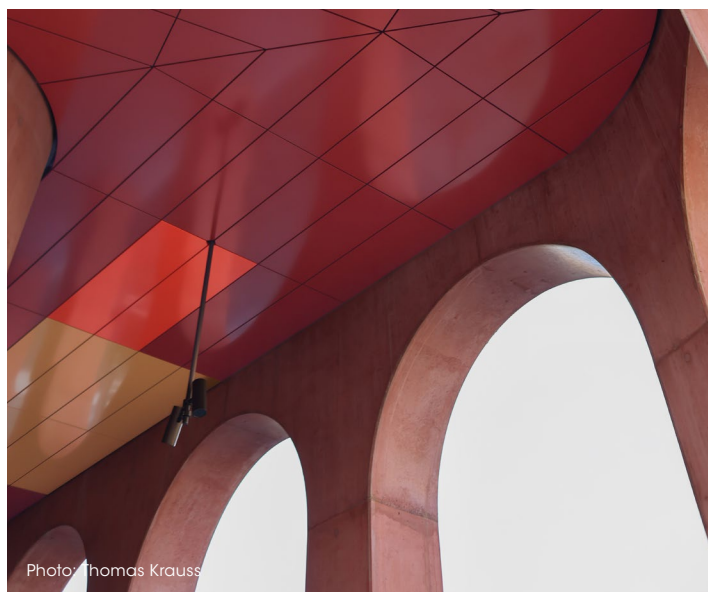


Photo: Thomas Krauss

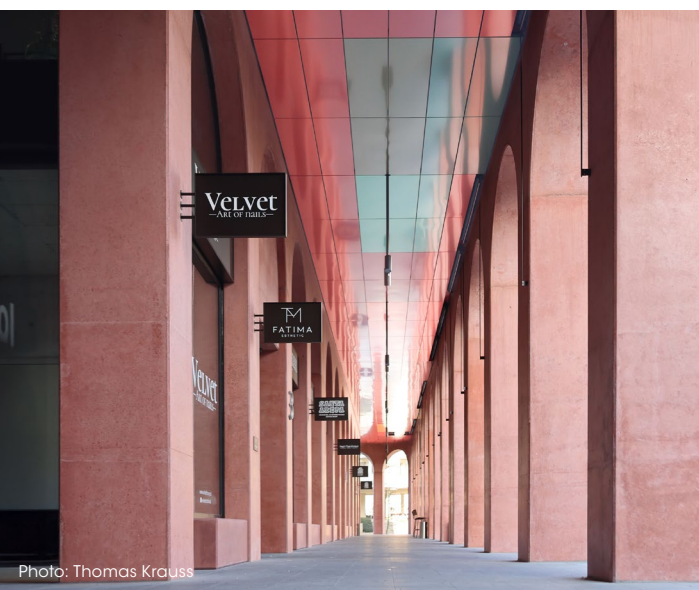


Photo: Thomas Krauss



Photo: Thomas Krauss

Architects

AM Architects GmbH

Completion

January 2025

Product

Custom production S7 EXTERIOR rail channel system

Material: 1 mm thick steel, galvanized; produced in various formats such as rectangular panels, trapezoidal panels, pentagonal panels and panels with rounded shapes; colours: powder-coated in 13 different RAL colours