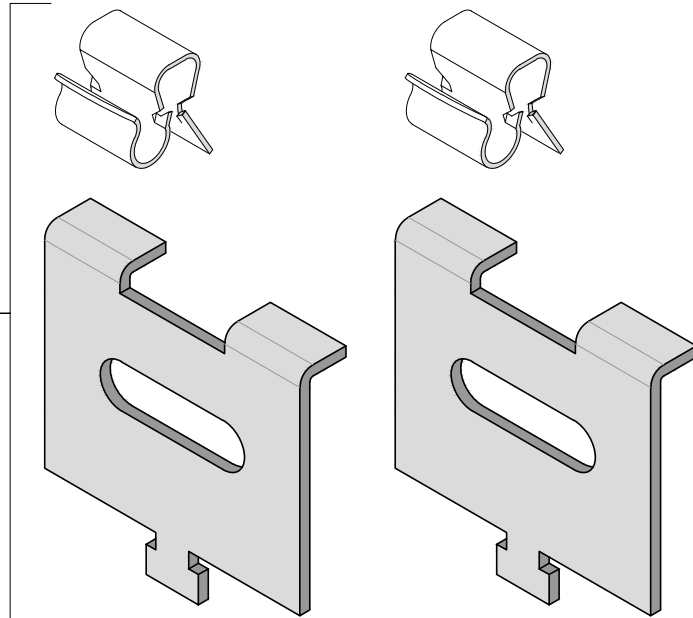
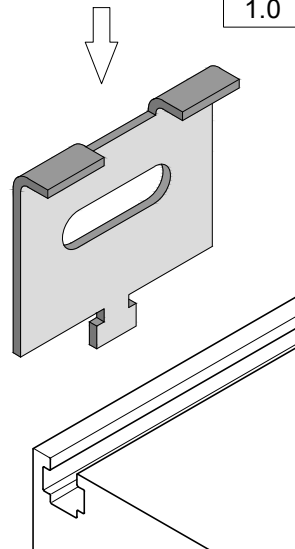
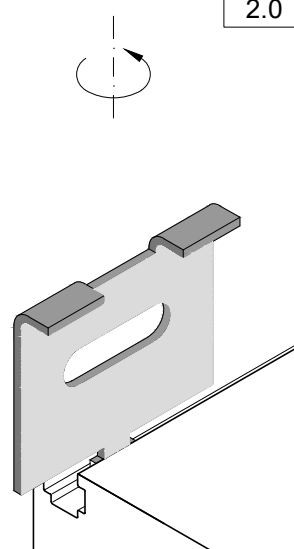
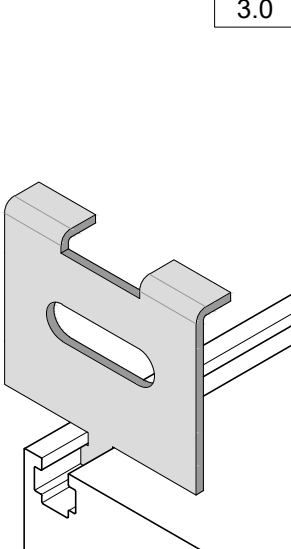
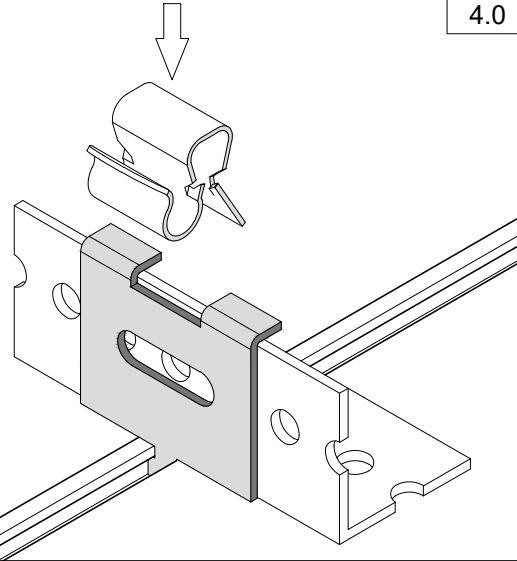
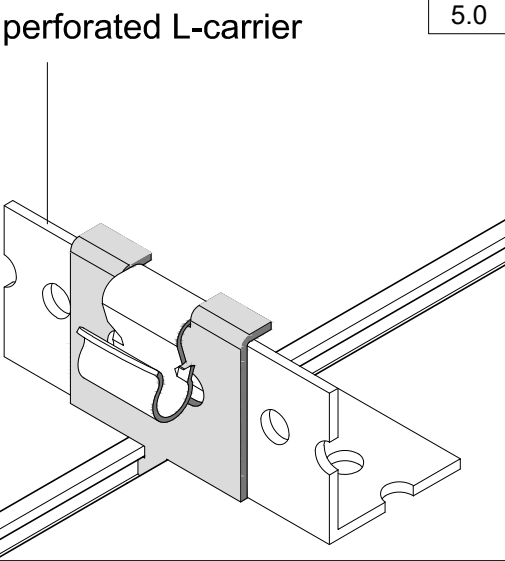
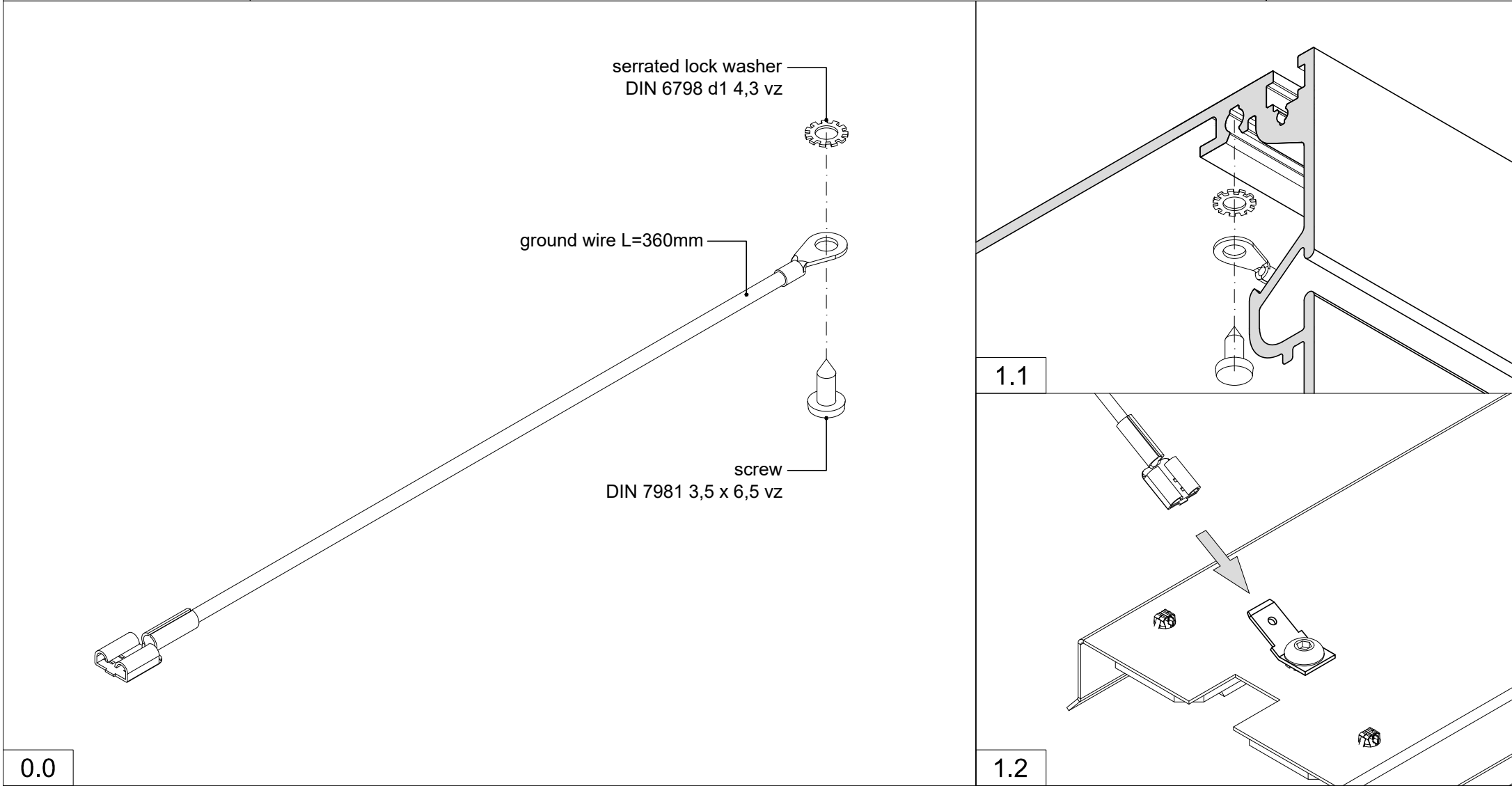
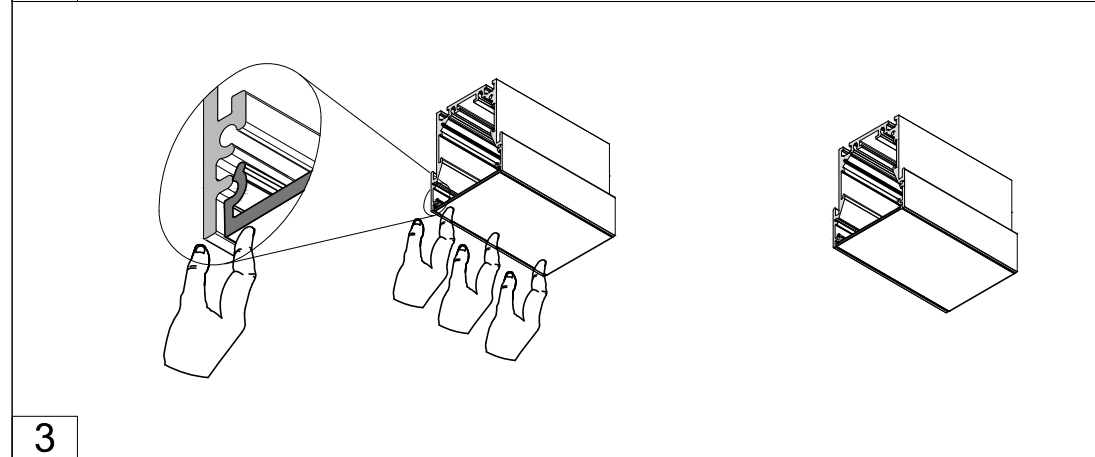
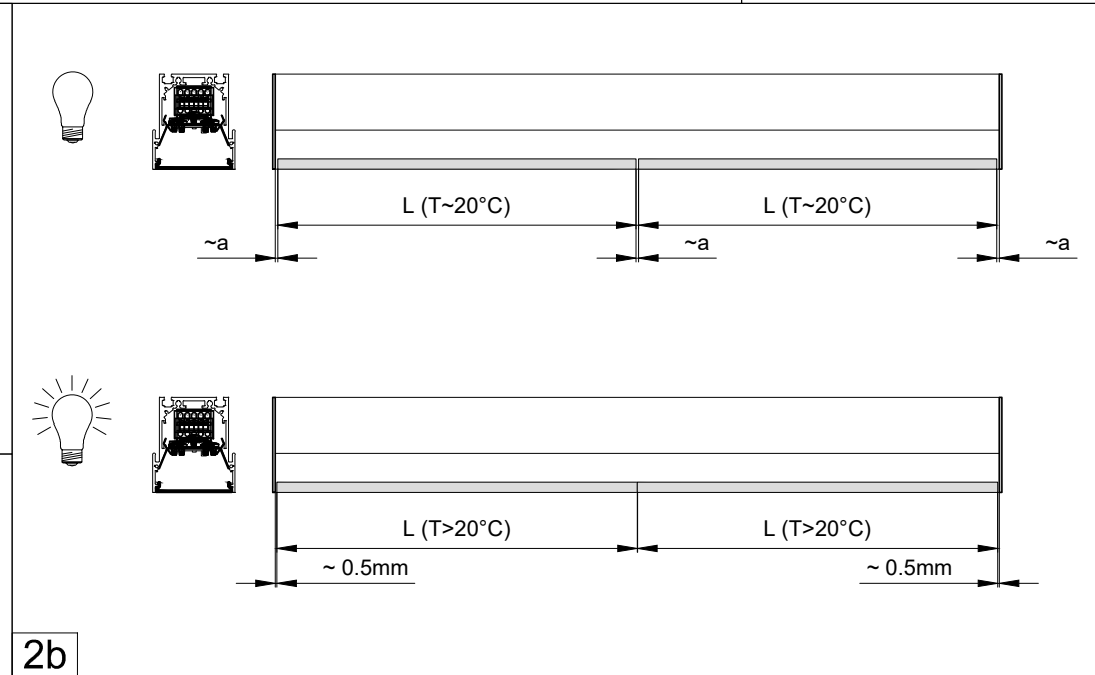
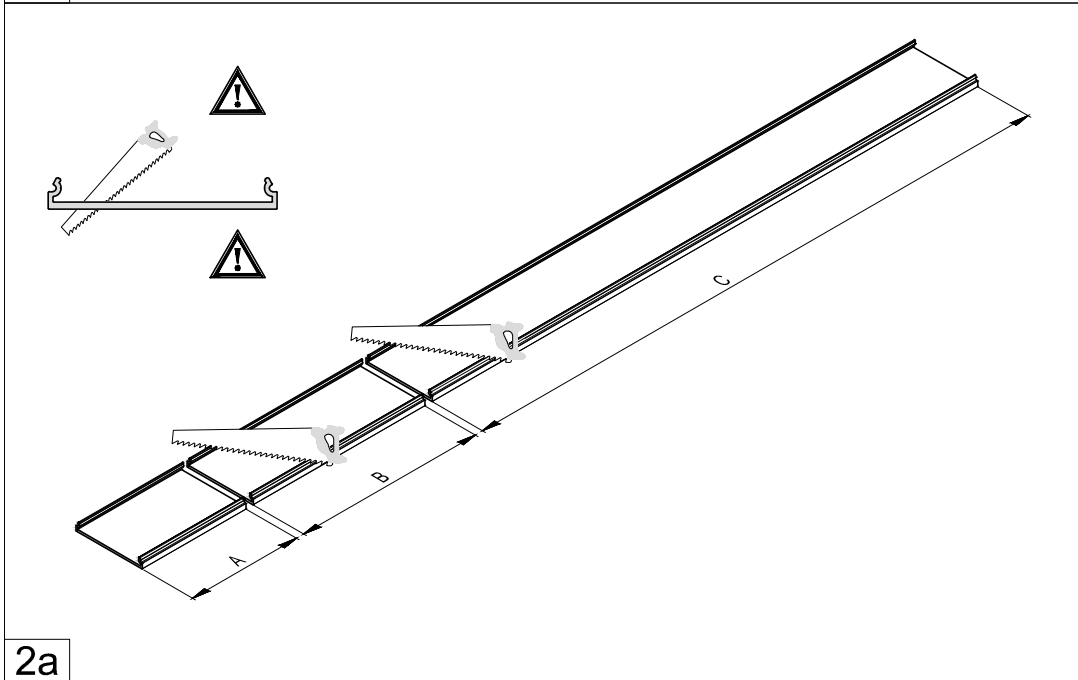
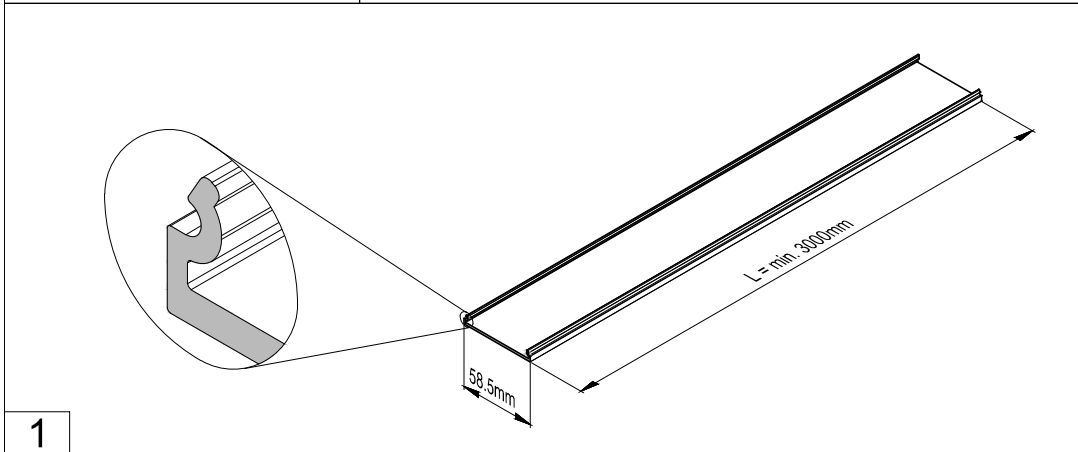


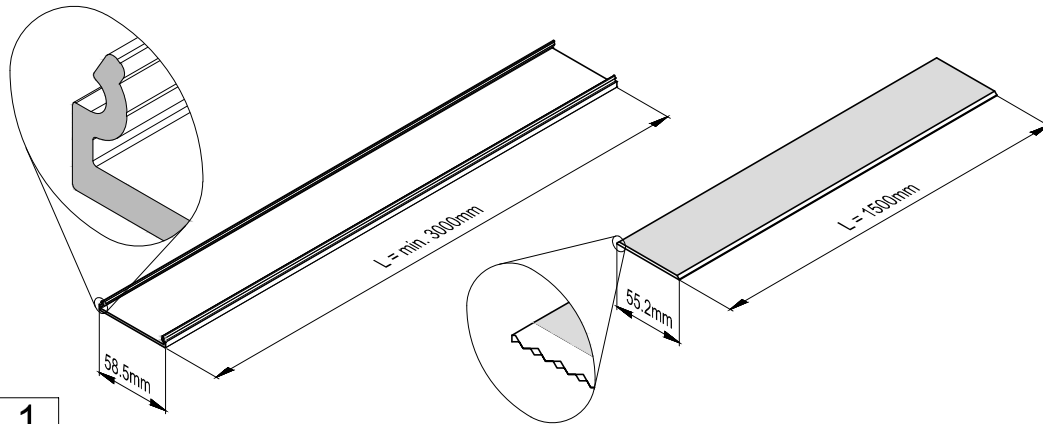
durlum GmbH Schopfheim, Germany		OMEGA 40 / 100 / 100e / 63 Suspending braket to perforated L-carrier		mounting instruction	
<div>Suspending braket to perforated L-carrier</div> 		<div>1.0</div> 	<div>2.0</div> 	<div>3.0</div> 	
		<div>4.0</div> 	<div>perforated L-carrier</div> <div>5.0</div> 		
<div>This drawing is passed on with all rights reserved to durlum, and must ONLY be used for common purpose projects. Transmission to third parties especially to competitors is prohibited! durlum GmbH, Schopfheim, Germany All technical modifications to be reserved.</div>					
DIN A4 mounting instruction		drawn.: 05.08.2020-SE		Rev.: TT.MM.JJJJ	OM000-Z01A__EN P01/01



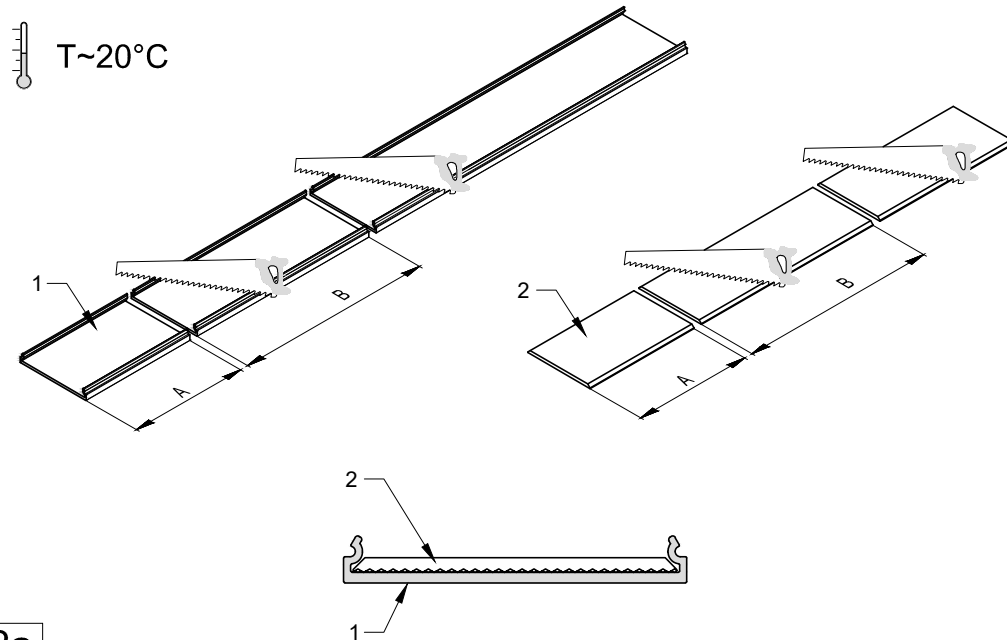
This drawing is passed on with all rights reserved to **durlum**, and must ONLY be used for common purpose projects.
Transmission to third parties especially to competitors is prohibited! **durlum** GmbH, Schopfheim, Germany
All technical modifications to be reserved.



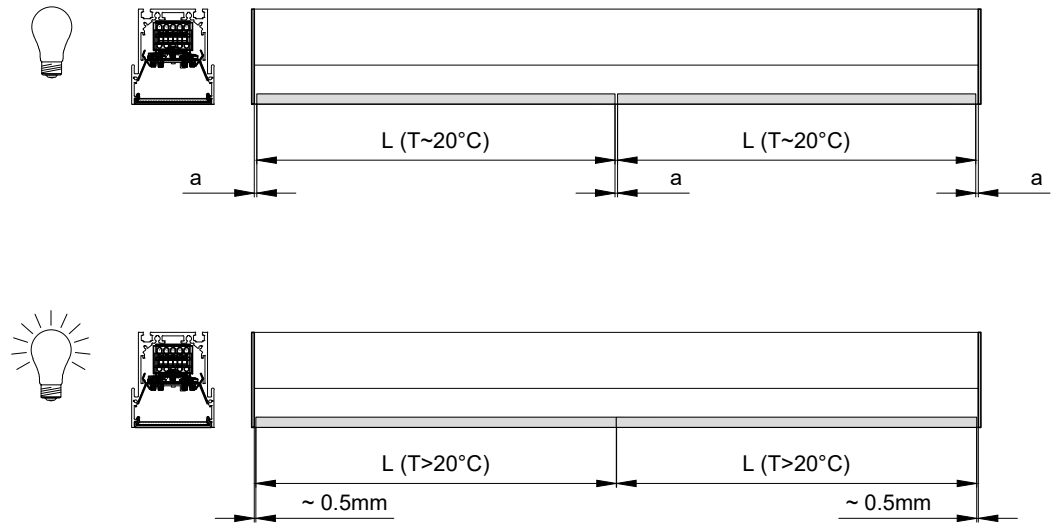
This drawing is passed on with all rights reserved to **durlum**, and must ONLY be used for common purpose projects.
Transmission to third parties especially to competitors is prohibited! **durlum** GmbH, Schopfheim, Germany
All technical modifications to be reserved.



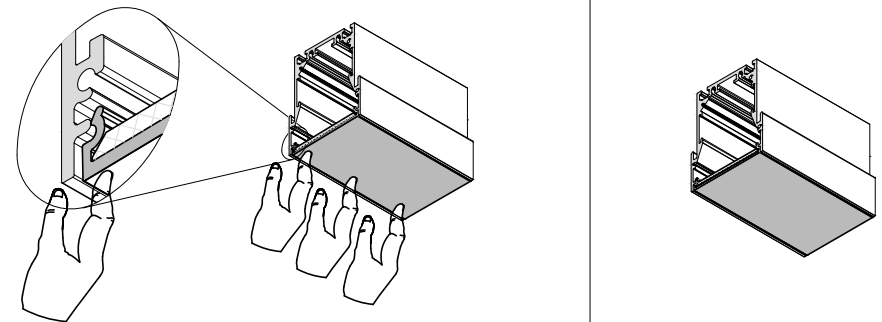
1



2a

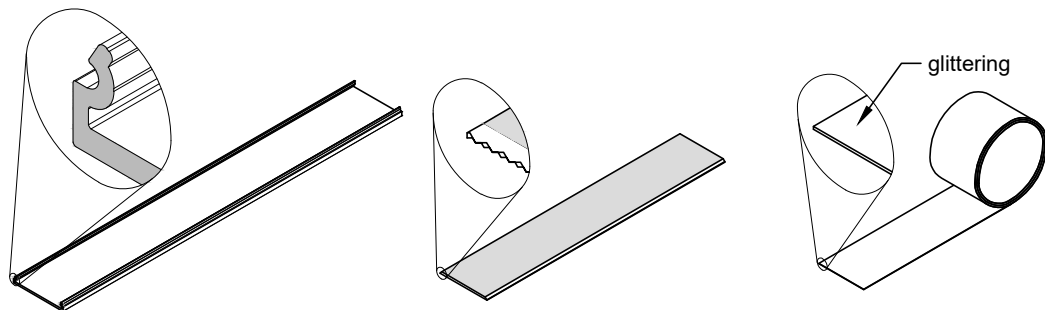


2b

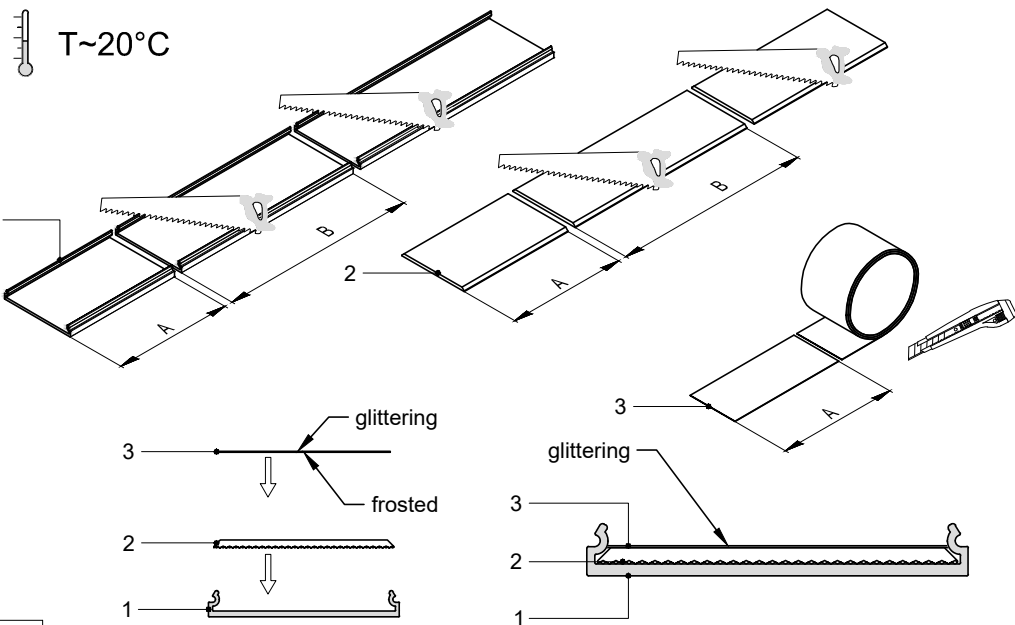


3

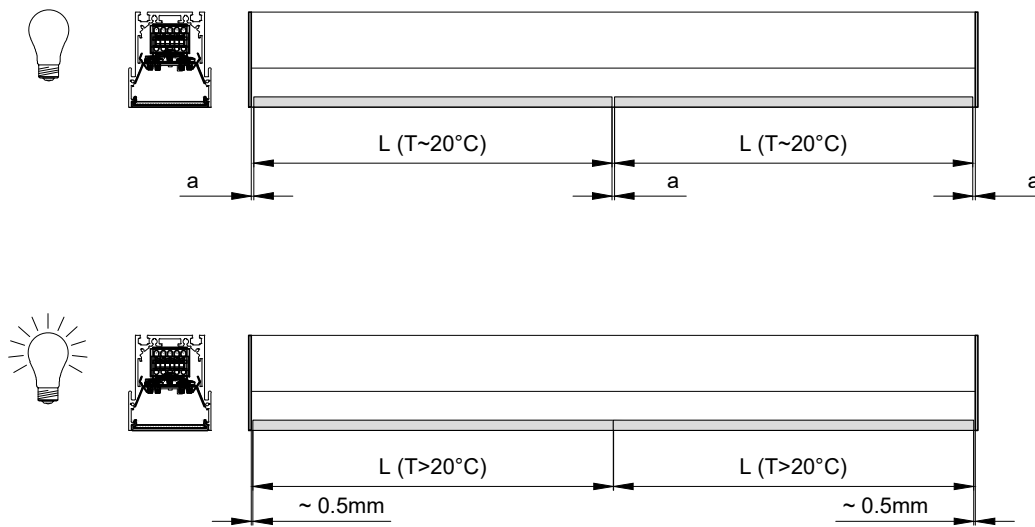
This drawing is passed on with all rights reserved to **durlum**, and must ONLY be used for common purpose projects.
Transmission to third parties especially to competitors is prohibited! **durlum** GmbH, Schopfheim, Germany
All technical modifications to be reserved.



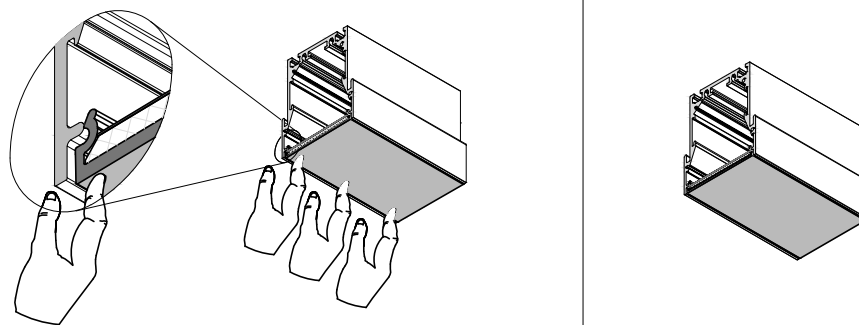
1



2a

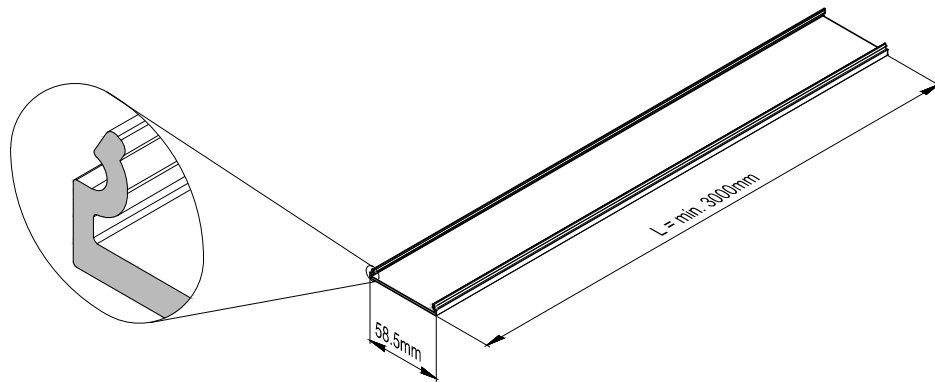


2b

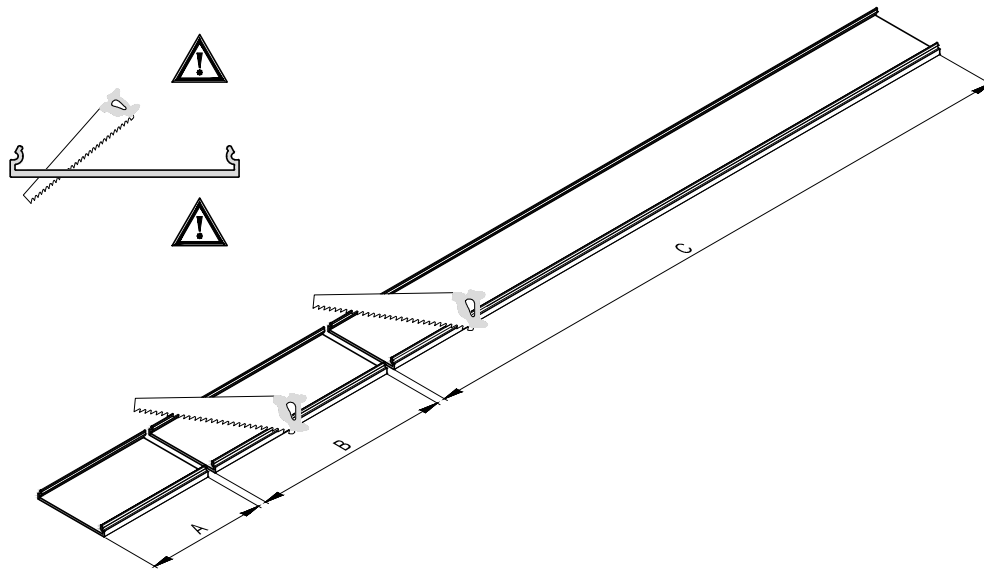


3

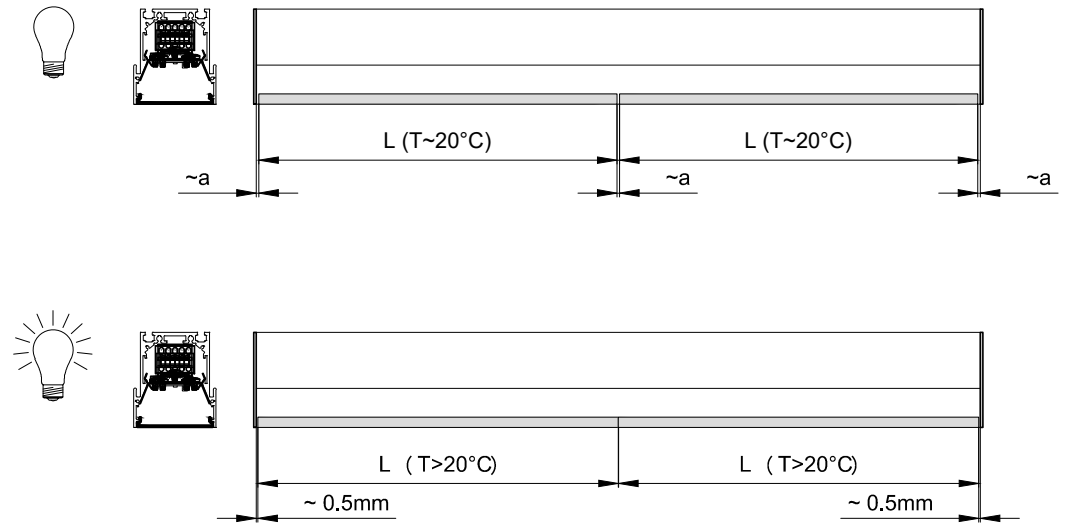
This drawing is passed on with all rights reserved to **durlum**, and must ONLY be used for common purpose projects.
Transmission to third parties especially to competitors is prohibited! **durlum** GmbH, Schopfheim, Germany
All technical modifications to be reserved.



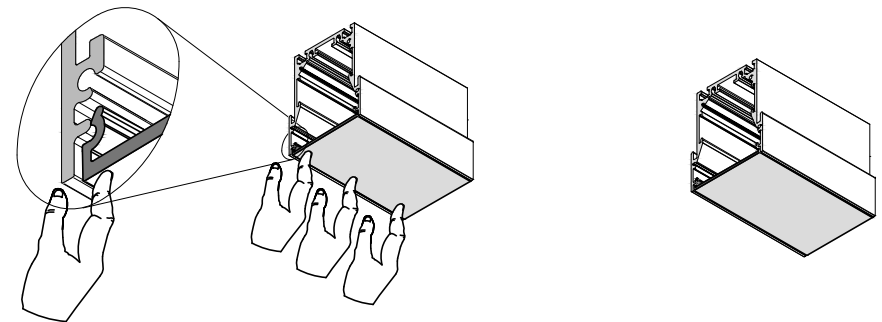
1



2a

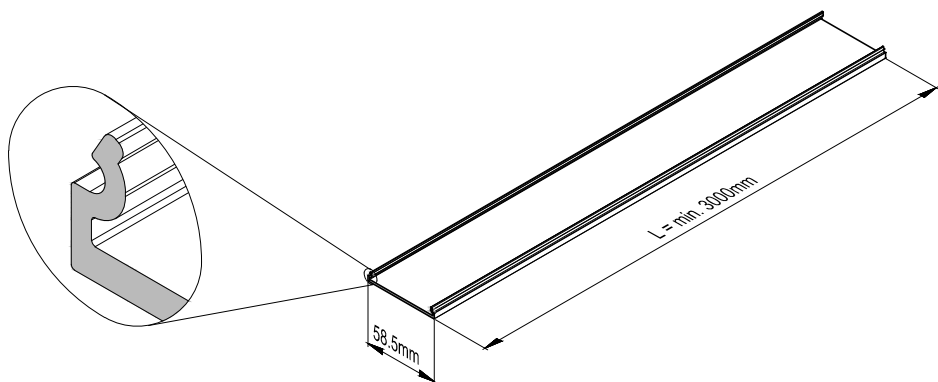


2b

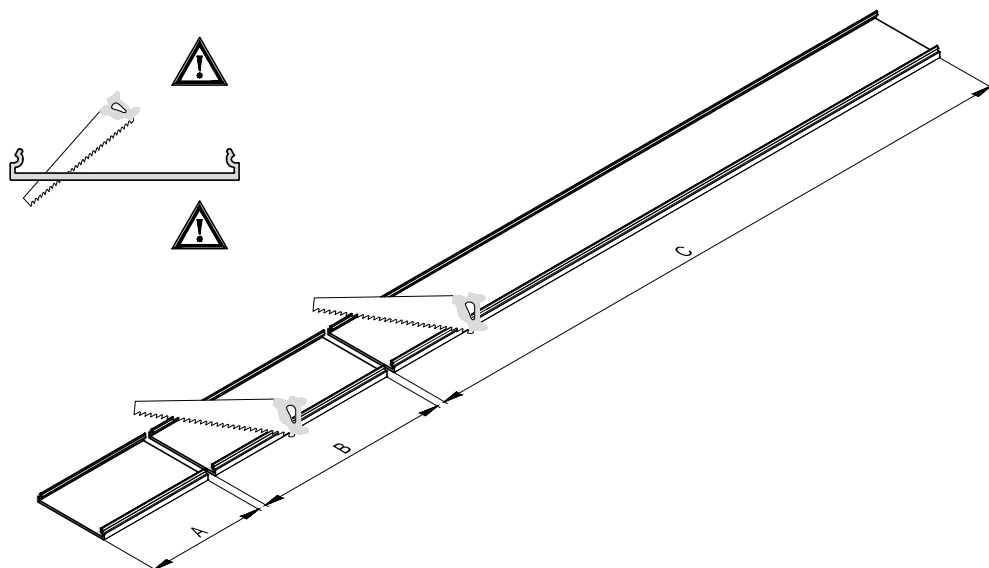


3

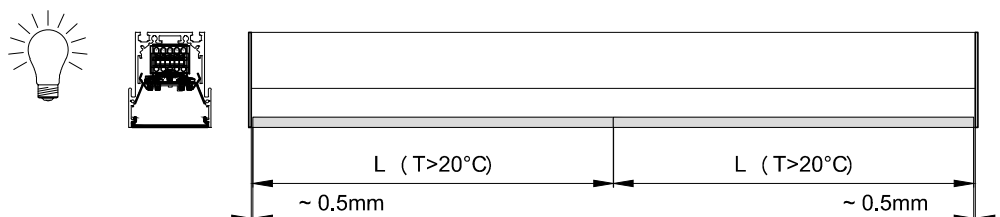
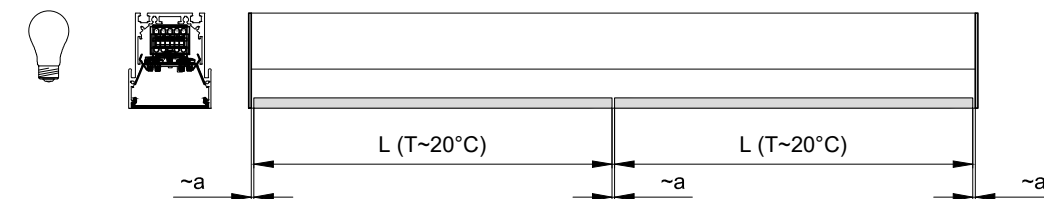
This drawing is passed on with all rights reserved to **durlum**, and must ONLY be used for common purpose projects.
Transmission to third parties especially to competitors is prohibited! **durlum** GmbH, Schopfheim, Germany
All technical modifications to be reserved.



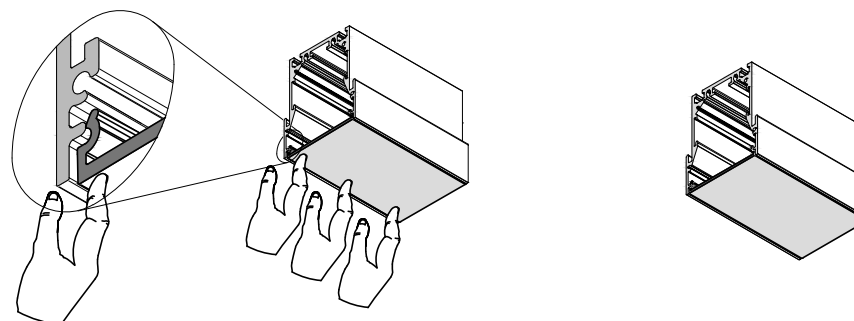
1



2a



2b



3

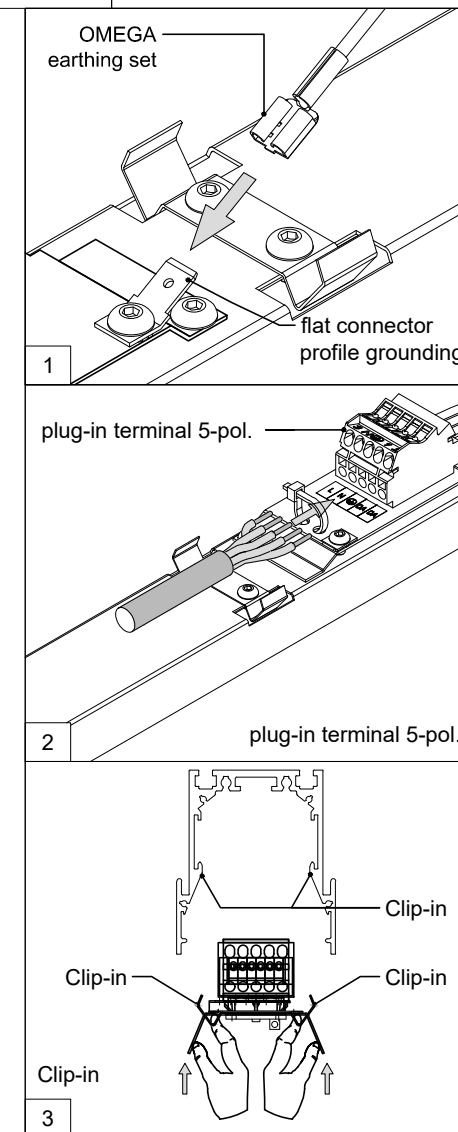
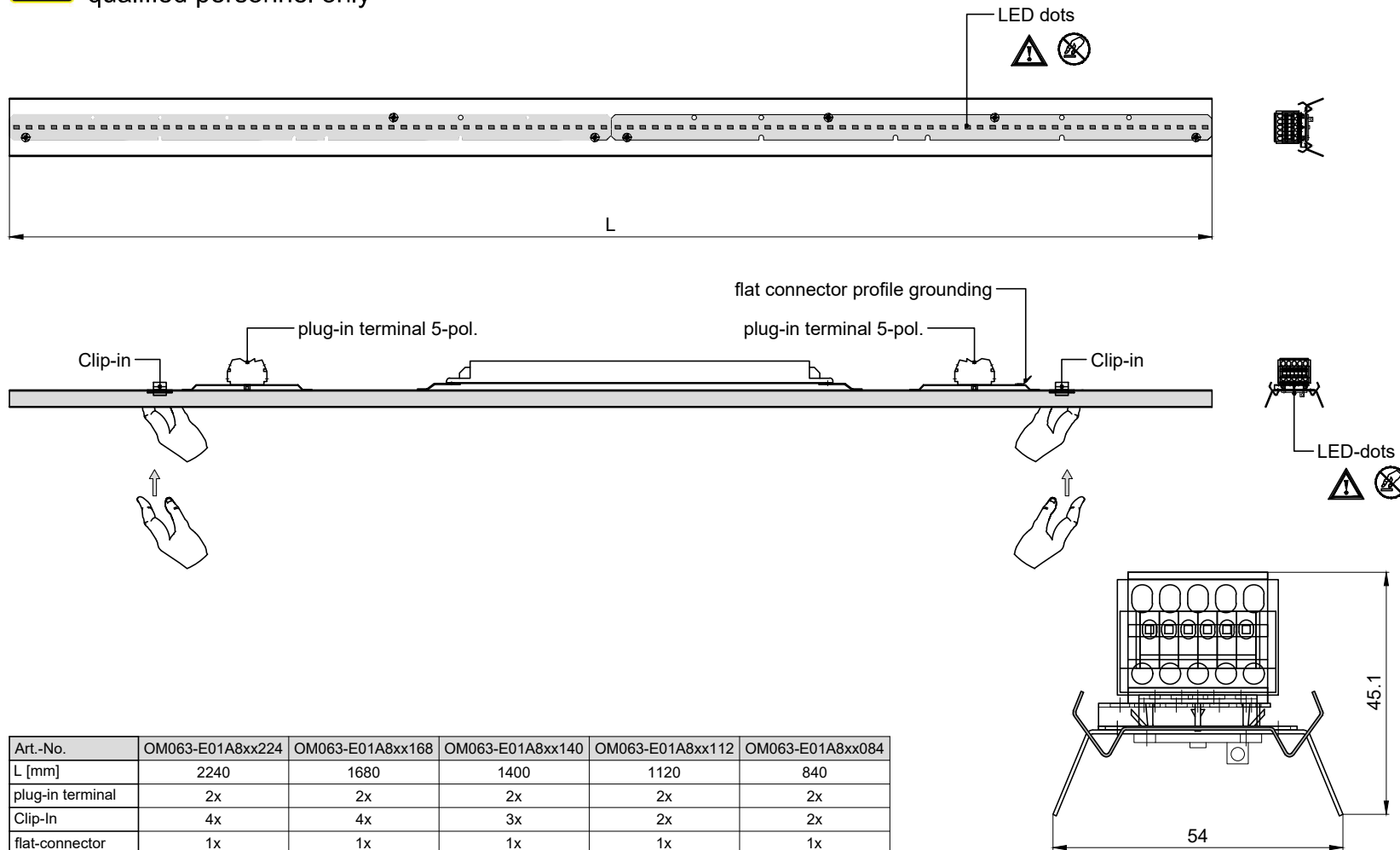
This drawing is passed on with all rights reserved to **durlum**, and must ONLY be used for common purpose projects.
Transmission to third parties especially to competitors is prohibited! **durlum** GmbH, Schopfheim, Germany
All technical modifications to be reserved.

OM40 LED luminaire insert



mounting instruction



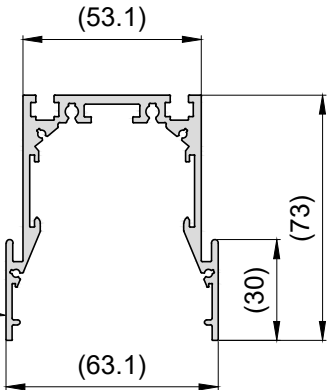
the electrical installation by
qualified personnel only



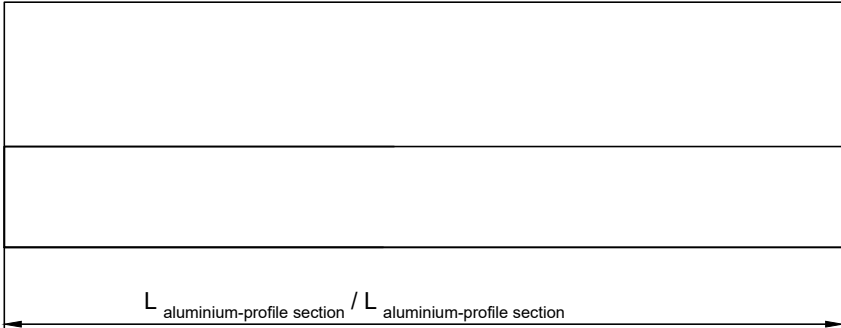
This drawing is passed on with all rights reserved to **durlum**, and must ONLY be used for common purpose projects.
Transmission to third parties especially to competitors is prohibited! **durlum** GmbH, Schopfheim, Germany
All technical modifications to be reserved.






Aluminium-profile section carry electrical equipment must be grounded.

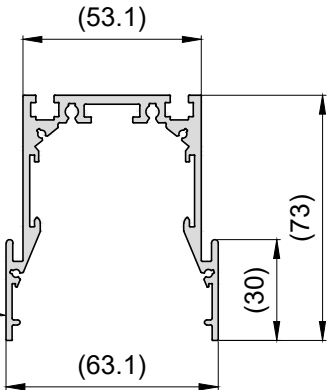


Aluminium base channel must be grounded.

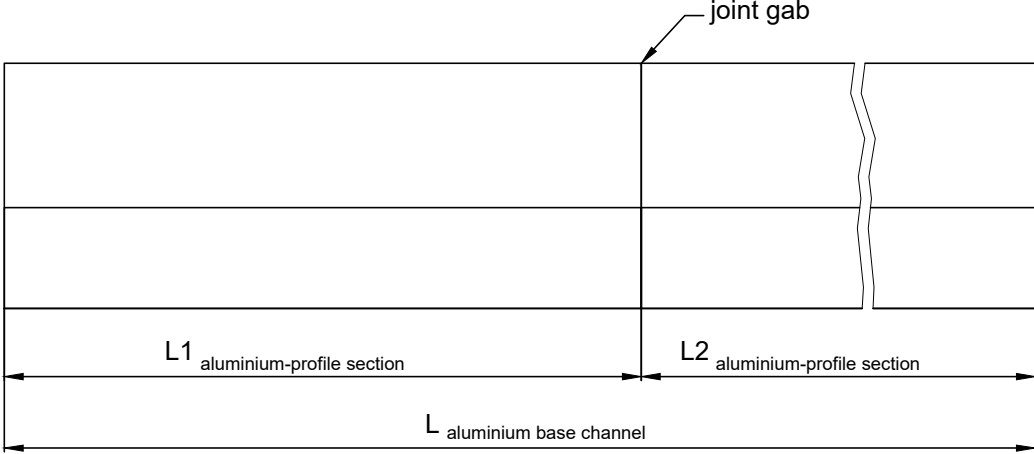


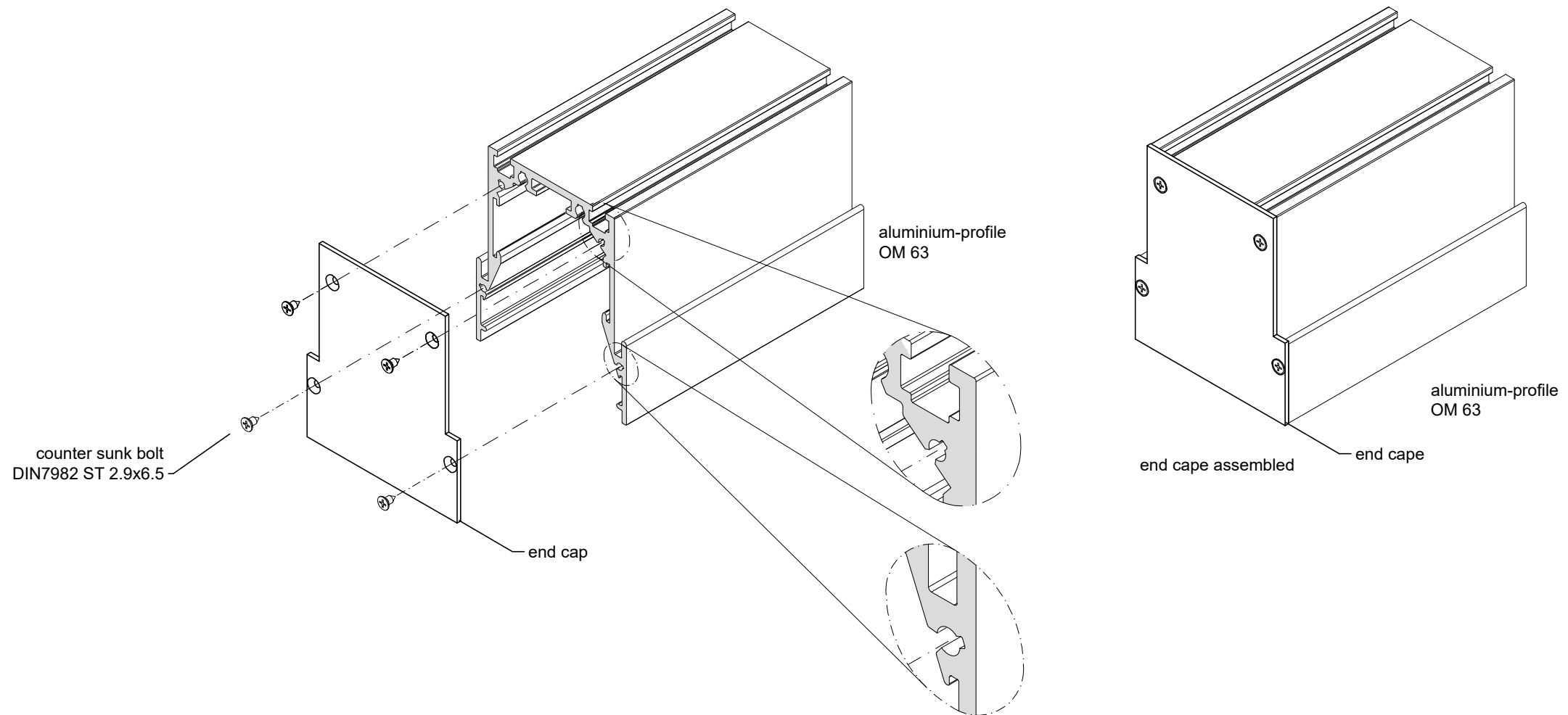
Aluminium-profile section carry electrical equipment must be grounded.



Aluminium base channel must be grounded.



This drawing is passed on with all rights reserved to **durlum**, and must ONLY be used for common purpose projects.
 Transmission to third parties especially to competitors is prohibited! **durlum** GmbH, Schopfheim, Germany
 All technical modification to be reserved.



This drawing is passed on with all rights reserved to **durlum**, and must ONLY be used for common purpose projects.
Transmission to third parties especially to competitors is prohibited! **durlum** GmbH, Schopfheim, Germany
All technical modificatins to be reserved.

durlum GmbH Schopfheim, Germany		OM 63 linear connector		mounting instruction	
<div>0</div> <div><div>Linear connector OM063-Z05A</div><div><div><div></div><div></div><div></div><div></div><div></div><div></div></div><div><div></div><div></div><div></div><div></div><div></div><div></div></div></div><div>setscrew DIN 916 M3x3 SW1.5</div><div>M3</div><div>dim. [l x w x s] (mm) : 120 x 20.9 x1.25</div></div>		<div>1</div> <div><div>Lineal connector OM063-Z05A</div><div><div><div></div><div></div><div></div><div></div><div></div><div></div></div><div><div></div><div></div><div></div><div></div><div></div><div></div></div></div><div>aluminium-profil OM63</div><div>joint gap</div><div>aluminium-profil OM63</div></div>		<div>2</div> <div><div><div><div></div><div></div><div></div><div></div><div></div><div></div></div><div><div></div><div></div><div></div><div></div><div></div><div></div></div></div></div>	
<div>3</div> <div><div><div><div></div><div></div><div></div><div></div><div></div><div></div></div><div><div></div><div></div><div></div><div></div><div></div><div></div></div></div></div>		<div>4</div> <div><div><div><div></div><div></div><div></div><div></div><div></div><div></div></div><div><div></div><div></div><div></div><div></div><div></div><div></div></div></div></div>		<div>5</div> <div><div><div><div></div><div></div><div></div><div></div><div></div><div></div></div><div><div></div><div></div><div></div><div></div><div></div><div></div></div></div><div>Linear connector OM63-Z05A</div><div>4x DIN916 M3x3</div><div>4x</div></div>	
<div><div>This drawing is passed on with all rights reserved to durlum, and must ONLY be used for common purpose projects. Transmission to third parties especially to competitors is prohibited! durlum GmbH, Schopfheim, Germany All technical modifications to be reserved.</div></div>					
DIN A4 mounting instruction		drawn: 12.08.2020-SE		Rev: TT.MM.JJJJ M-OM063-Z05A__EN P01/01	

durlum GmbH Schopfheim, Germany		OM63 5-pole trough wiring		mounting instruction	
<div><div><div><div><div></div><div></div></div><div></div></div><div>the electrical installation by qualified personnel only</div></div><div><div><div><div></div><div></div></div><div></div></div><div>500</div></div></div> <div>0</div>		<div><div><div><div><div></div><div></div></div><div></div></div><div>the electrical installation by qualified personnel only</div></div><div><div><div><div></div><div></div></div><div></div></div><div>LED-luminaire insert</div></div><div>A</div></div> <div>1.1</div>		<div><div><div><div><div></div><div></div></div><div></div></div><div>the electrical installation by qualified personnel only</div></div><div><div><div><div></div><div></div></div><div></div></div><div>LED-luminaire insert</div></div><div>A</div></div> <div>1.2</div>	
<div><div><div><div></div><div></div></div><div></div></div><div>A</div><div>LED luminaire-insert</div><div>LED luminaire-insert</div></div> <div>1.0</div>		<div><div><div><div><div></div><div></div></div><div></div></div><div>the electrical installation by qualified personnel only</div></div><div><div><div><div></div><div></div></div><div></div></div><div>LED-luminaire insert</div></div><div>A</div><div>LED-luminaire insert</div></div> <div>1.3</div>		<div><div><div><div><div></div><div></div></div><div></div></div><div>the electrical installation by qualified personnel only</div></div><div><div><div><div></div><div></div></div><div></div></div><div>LED-luminaire insert</div></div><div>A</div><div>LED-luminaire insert</div></div> <div>1.4</div>	
<div><div><div><div><div></div><div></div></div><div></div></div><div>This drawing is passed on with all rights reserved to durlum, and must ONLY be used for common purpose projects. Transmission to third parties especially to competitors is prohibited! durlum GmbH, Schopfheim, Germany All technical modifications to be reserved.</div></div></div>					
DIN A4 mounting instruction		drawn.: 10.09.2020-SE		Rev.: TT.MM.JJJJ M-OM063-Z07A__EN P01/01	